



VELINOR
INTERNATIONAL



Velinor Brick Factory was established in 1999 as part of the Velinor International Group's vision to provide high-quality building materials for a wide range of construction needs. The company began operations with over 150 traditional kilns, producing light yellow bricks that quickly became known for their durability and consistency, effectively meeting the long-standing demand of builders and developers.

In 2010, in alignment with modern industrial standards and a commitment to sustainable resource management, Velinor Brick Factory launched a fully automated production line. This upgrade more than doubled the company's output capacity while maintaining exceptional product quality.

By 2017, continued investment in advanced technologies and process optimization further enhanced production efficiency and operational performance.

In 2019, Velinor Brick Factory redefined its mission and vision as part of Velinor International's global strategy, emphasizing innovation, engineering excellence, and sustainable growth. Today, Velinor Brick Factory stands as a leading producer of construction materials, combining tradition, technology, and forward-thinking design to shape the future of modern building.



Velinor International currently produces over 100 unique products in a wide range of designs, colors, and sizes. The company proudly supplies premium decorative façade bricks tailored for the needs of leading construction firms and visionary architects.

In the production of Velinor façade bricks, fully automated production lines and modern roller kilns are utilized to eliminate the limitations of traditional brickmaking methods. These innovations ensure consistent color quality and dimensional precision in every product.

The use of advanced kilns and precisely formed raw clay bricks prevents deformation and color inconsistencies during the firing process — a common issue in traditional production. The automated control of the heating cycle ensures uniform baking throughout each batch, achieving a superior and stable finish.

Each kiln line operates under strict environmental and energy efficiency standards, with all color and size variations produced automatically. The company currently manufactures its flagship product range — Velinor OneColor, Velinor Plus, and Velinor Arc — representing the highest level of uniformity and aesthetic refinement.

Velinor International's roller kiln production lines, equipped with cutting-edge machinery from the world-renowned Italian brand SACMI, enable high-volume production across a complete palette of colors and finishes. These advanced systems allow for the manufacturing of large-format façade bricks, including dimensions of 250×55 mm, 210×65 mm, and 240×71 mm.





VELINOR
INTERNATIONAL



BUREAU
VERITAS
ISO 14001



BUREAU
VERITAS
ISO 9001



BUREAU
VERITAS
ISO 45001

CE



VELINOR
INTERNATIONAL



SACMI

A GLOBAL PARTNER



Roller Kiln

Dimensions (in centimeters)

Brick
Code

20*20

12*100

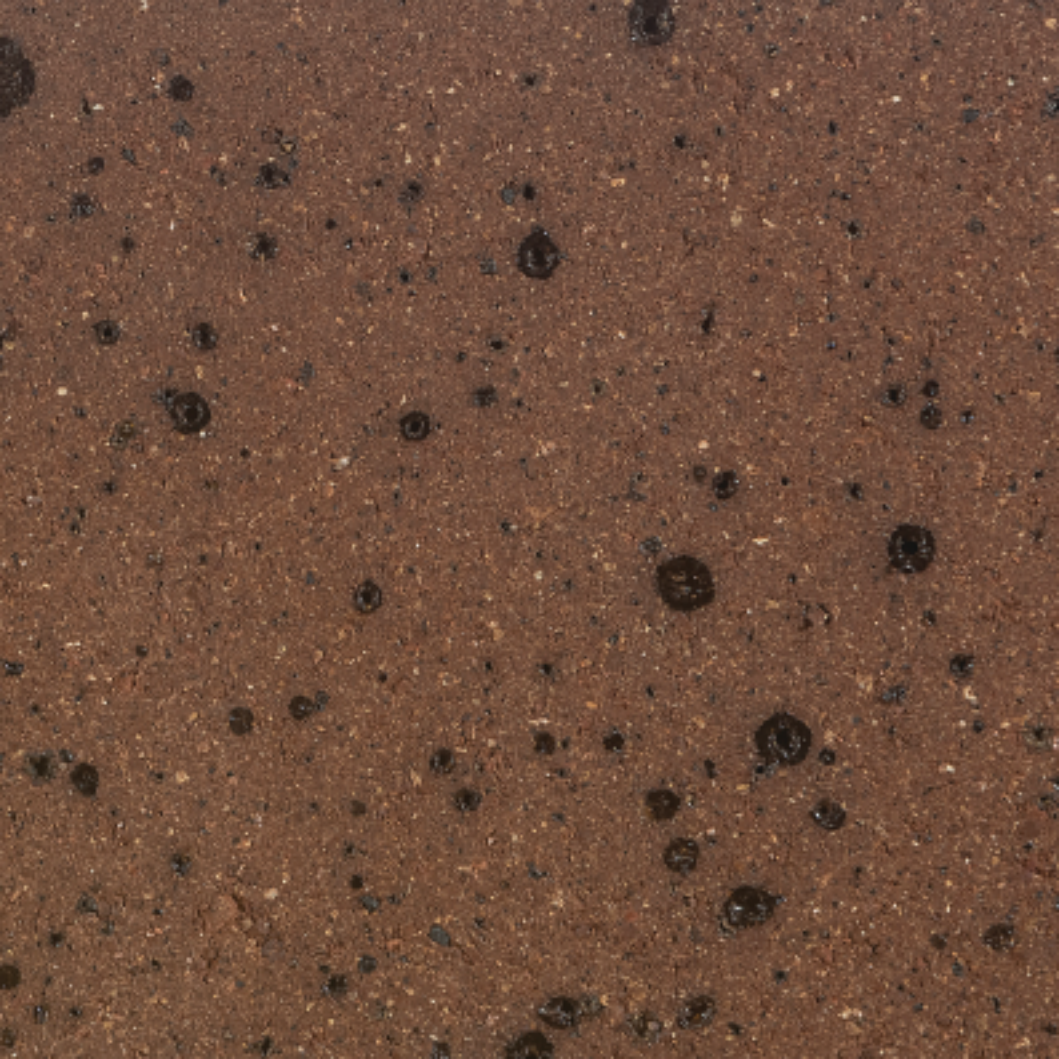
20*80

10*60

7*31

MP1







Roller Kiln

Dimensions (in centimeters)

Brick
Code

20*20

12*100

20*80

10*60

7*31

MP1R







Roller Kiln

Dimensions (in centimeters)

Brick
Code

20*20

12*100

20*80

10*60

7*31

MP2







Roller Kiln

Dimensions (in centimeters)

Brick
Code

20*20

12*100

20*80

10*60

7*31

MP2 R







Roller Kiln

Dimensions (in centimeters)

Brick
Code

20*20

12*100

20*80

10*60

7*31

MP4







Roller Kiln

Dimensions (in centimeters)

Brick
Code

20*20

12*100

20*80

10*60

7*31

MP4 R









VELINOR
INTERNATIONAL





Roller Kiln

Dimensions (in centimeters)

Brick
Code

20*20

12*100

20*80

10*60

7*31

KP1







Roller Kiln

Dimensions (in centimeters)

Brick
Code

20*20

12*100

20*80

10*60

7*31

KP1R







Roller Kiln

Dimensions (in centimeters)

Brick
Code

20*20

12*100

20*80

10*60

7*31

KP2







Roller Kiln

Dimensions (in centimeters)

Brick
Code

20*20

12*100

20*80

10*60

7*31

KP2 R











Roller Kiln

Dimensions (in centimeters)

Brick
Code

20*20

12*100

20*80

10*60

7*31

KP2 R







Roller Kiln

Dimensions (in centimeters)

Brick
Code

20*20

12*100

20*80

10*60

7*31

SP1R











Roller Kiln

Dimensions (in centimeters)

Brick
Code

20*20

12*100

20*80

10*60

7*31

TS1







Roller Kiln

Dimensions (in centimeters)

Brick
Code

20*20

12*100

20*80

10*60

7*31

TS1R







Roller Kiln

Dimensions (in centimeters)

Brick
Code

20*20

12*100

20*80

10*60

7*31

TS2







Roller Kiln

Dimensions (in centimeters)

Brick
Code

20*20

12*100

20*80

10*60

7*31

TS2R







Roller Kiln

Dimensions (in centimeters)

Brick
Code

20*20

12*100

20*80

10*60

7*31

TS3







Roller Kiln

Dimensions (in centimeters)

Brick
Code

20*20

12*100

20*80

10*60

7*31

TS4









VELINOR
INTERNATIONAL





Roller Kiln

Dimensions
(in cm)

Brick
Code

7*31

R2







Roller Kiln

Dimensions
(in cm)

Brick
Code

7*31

R3











Roller Kiln

Dimensions
(in cm)

Brick
Code

7*31

303 D







Roller Kiln

Dimensions
(in cm)

Brick
Code

7*31

303 L







Roller Kiln

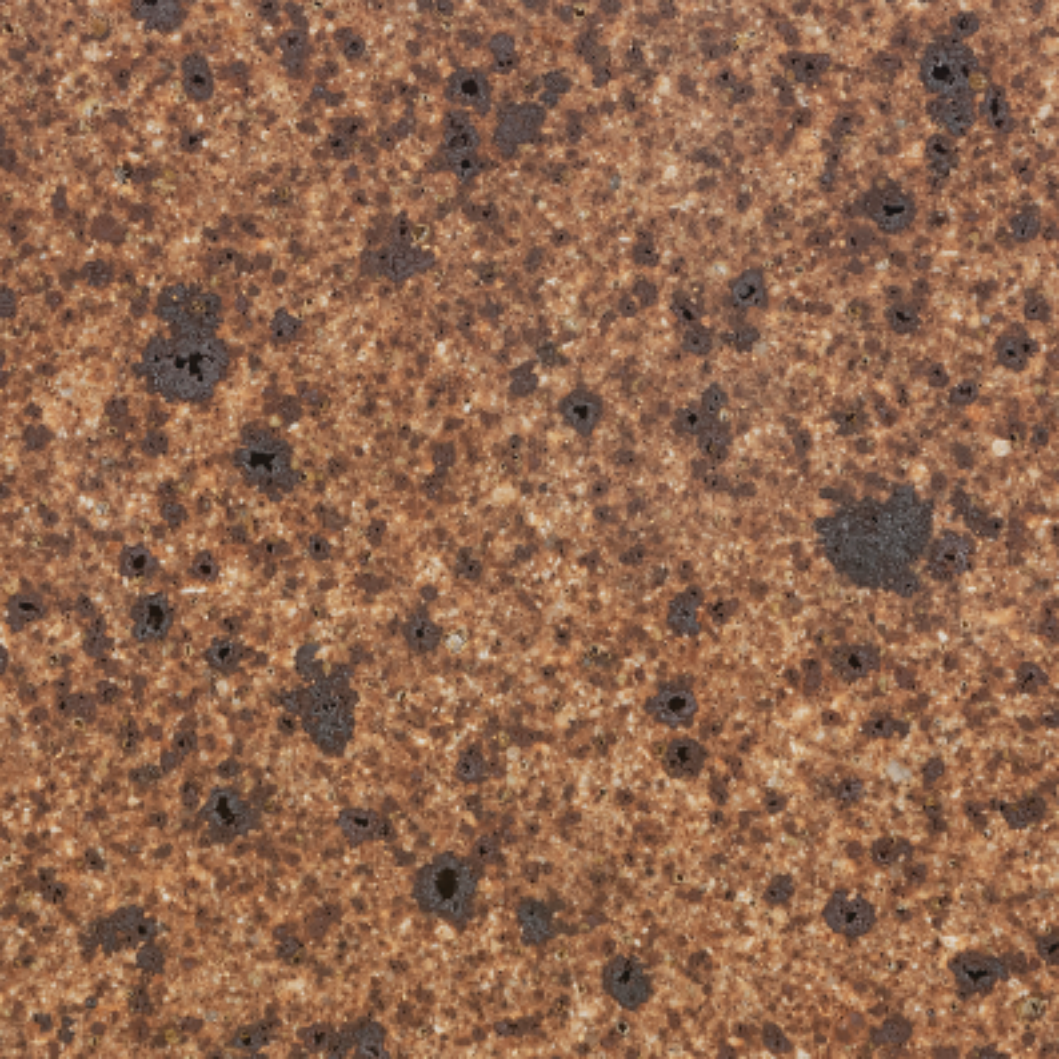
Dimensions
(in cm)

Brick
Code

7*31

304 D







Roller Kiln

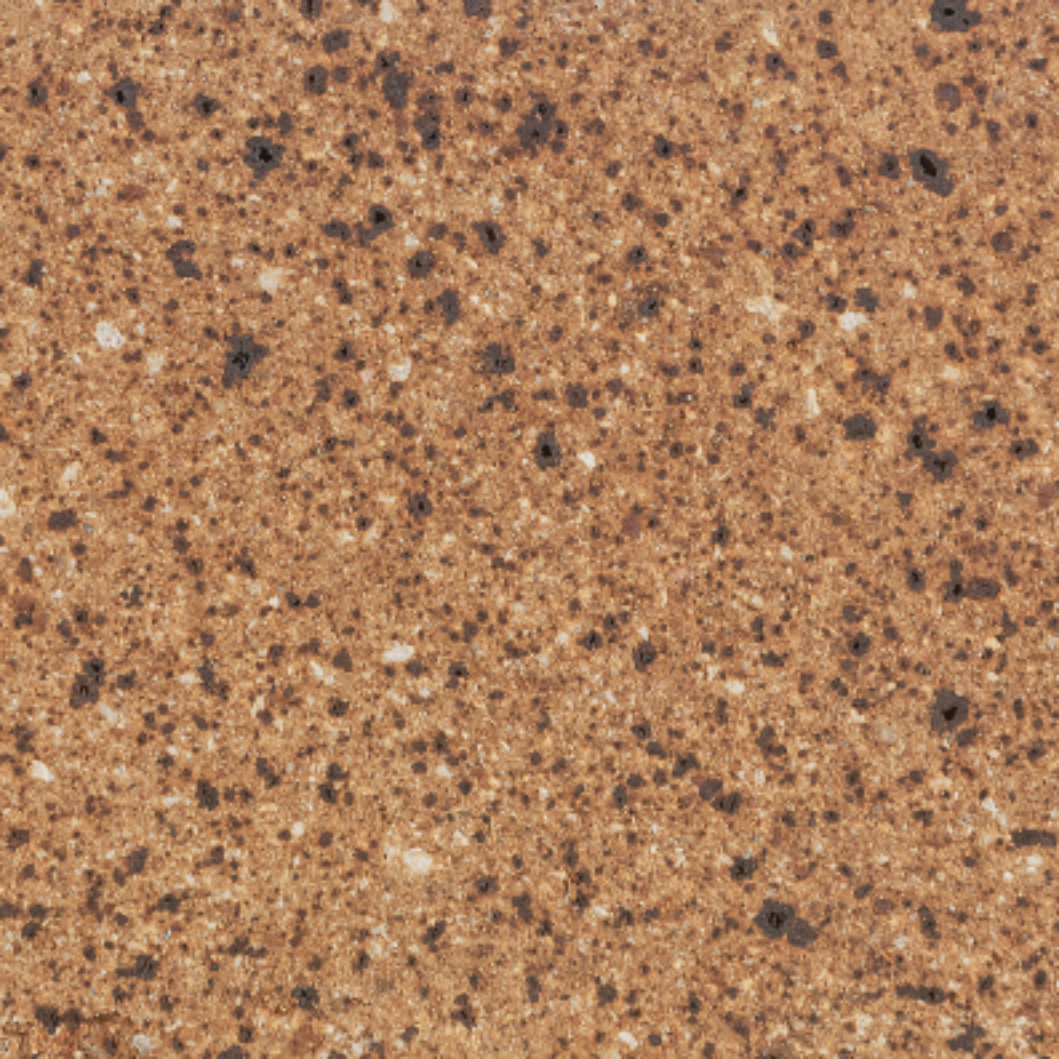
Dimensions
(in cm)

Brick
Code

7*31

304 L







304 L



304 D







Roller Kiln

Dimensions
(in cm)

Brick
Code

7*31

404







Roller Kiln

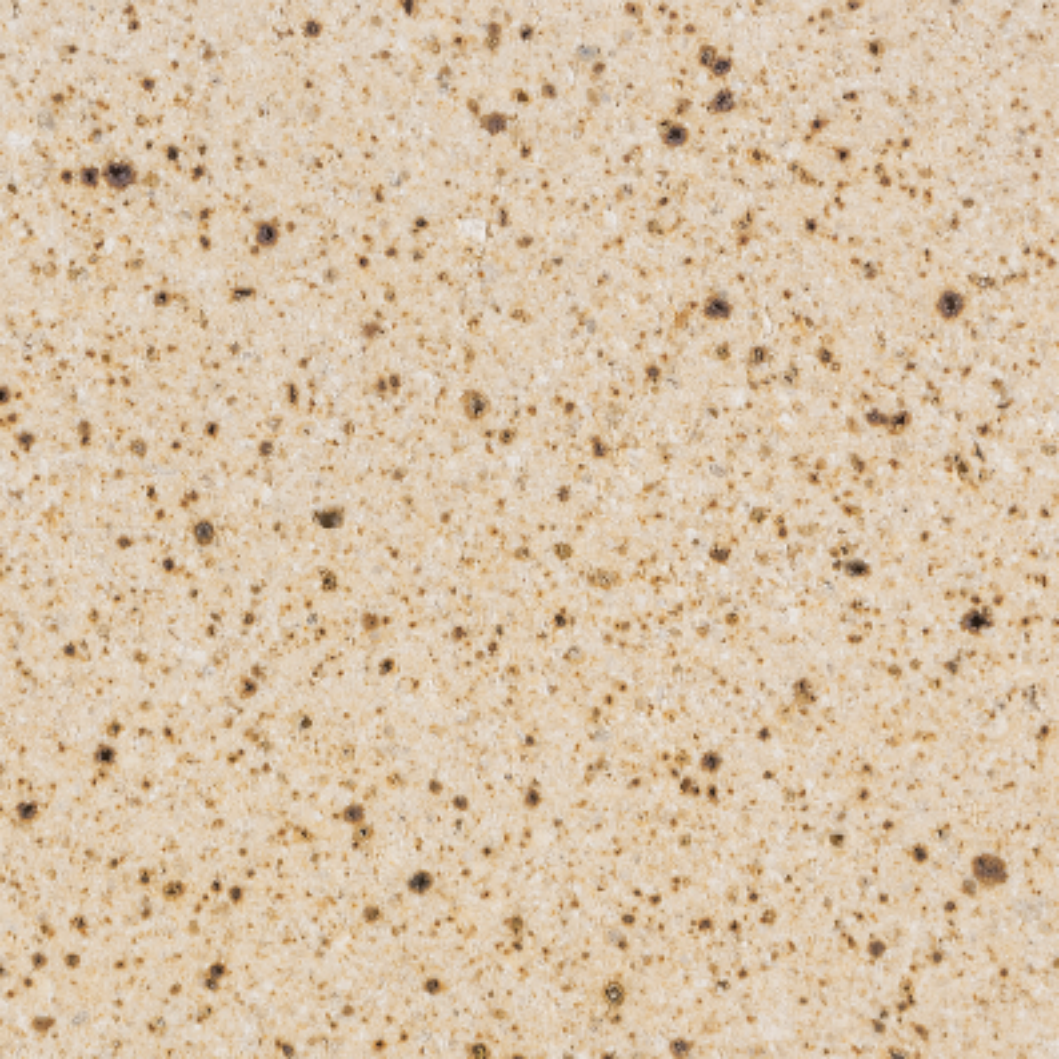
Dimensions
(in cm)

Brick
Code

7*31

503









503











